



## PGMHA Arena Protocols

***The City of Prince George does not allow spectators in any of their facilities, as disappointing as this is for families, we are focusing on the positive – our kids are playing hockey and that is most important.***

- Access to Arenas is limited to 15 minutes prior to a game and 15 minutes post game.
- Showers are not available
- Water bottles arrive filled – no fountains or dispensers are available.
- Dressing rooms are available for game, please respect limits and wear a mask if physical distancing cannot be maintained.
- Visiting Teams are limited to the players, coaching staff, Manager, HCSP and one (1) live video/update person. Masks are mandatory for coaches, managers, HCSP, video/update person.

*All PGMHA teams are following the Cohort Rules laid out by BC Hockey, we will not be playing teams outside of our cohorts without a 14 day pause prior to and after such an event. We hope that any teams arriving to play our teams are also respecting these rules and not putting our association at risk of needing to temporarily pause all activities for our membership.*

**Please complete a Health Check prior to arriving at the rink for all  
Players, Coach's, Manager, HCSP and video person**

Email a team list of all in attendance, confirm all have completed a health check prior to arriving at the arena and that all meet current covid-19 protocols. [covidforms@pgmha.com](mailto:covidforms@pgmha.com) (please title the email with Team name & Division)

### Health Check Questions

Have you experienced a fever of 38.0 or greater in the past 14 days?

Have you received a positive result from a COVID – 19 test with the past 14 days?

In the past 14 days have you been in close contact with anyone that has or had symptoms of COVID-19 that required you to quarantine?

In the past 14 days have you or someone you have been in close contact with traveled to an area that required quarantine upon return?

In the past 14 days, have you experienced any of the following new symptoms not attributed to another health condition?

- Loss of smell or taste
- Runny Nose
- Shortness of Breath
- Sore Throat

If answering **YES** to any of these – Please do not enter the facility.

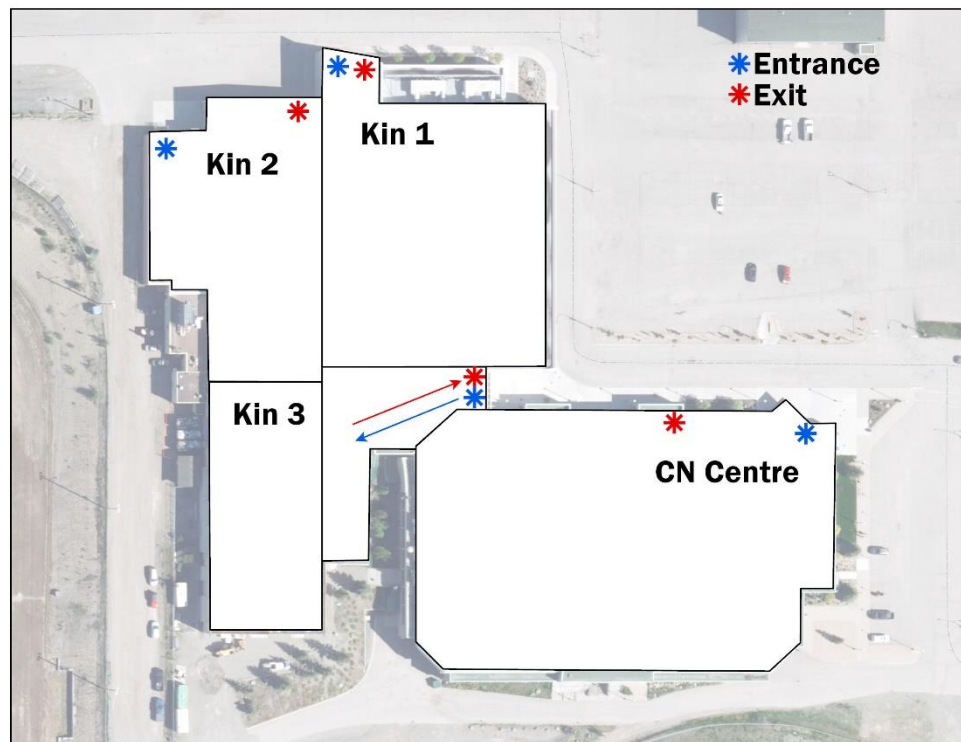
**Entrances/Exit** – follow posted signs, hand sanitizer is available and masks are highly recommended for all entering the facilities.

Kin 1 – enter in the doors to the right, exit via sliding doors

Kin 2 – far west doors, direct access to dressing room hallway

Kin 3 – main complex door accessing Kin Atrium

CN Centre – box office doors



Please see our [Return to Play page](#) for detailed arenas maps, supplied by the City of Prince George.